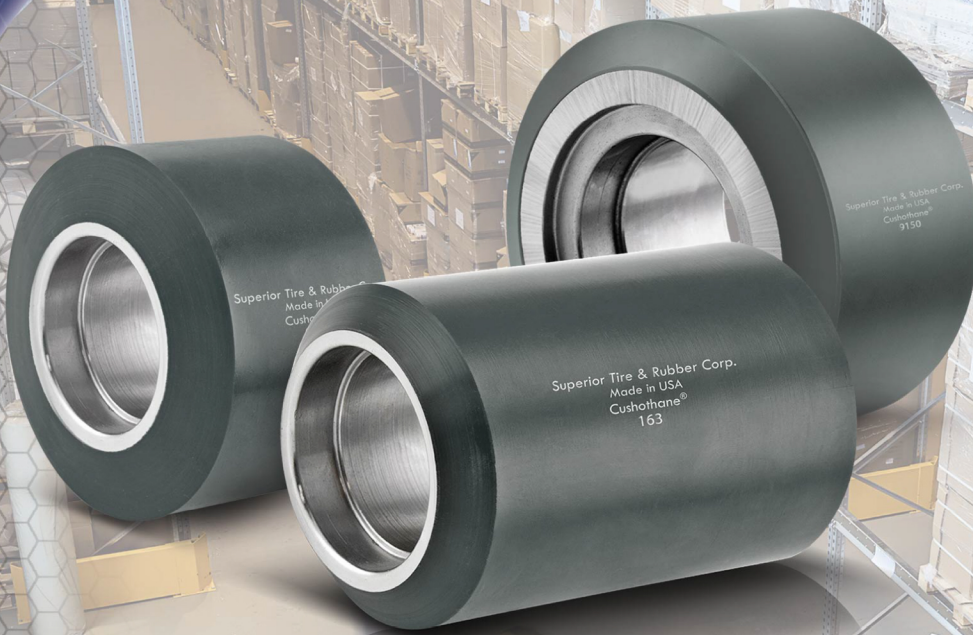


CUSHOTHANE®

The Universal Usage Wheel Specialist



- High performance 95A compound
- Designed with a perfect balance to perform in 80% of applications
- Higher abrasion & chunking resistance resulting in a longer work life
- Higher reliability and quality consistency



SUPERIOR
TIRE & RUBBER CORP.
MATERIAL HANDLING COMPONENTS

50 YEARS
1970 - 2020
CREATING SOLUTIONS
TOGETHER

WESTMAT.COM

CUSHOTHANE®

Applications

Designed specifically to exceed the load and duty requirements of general fork truck load wheel usage while reducing cost.

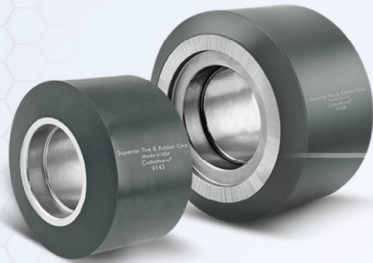
Tires

CL-I CL-II CL-III

Load wheels

CL-II CL-III

The Universal Usage Wheel Specialist



High Performance 95A Compound - made from a high grade 95A polyurethane that is as premium as competitors' premium heavy load 95A compound

Longer Work-life - significantly higher abrasion and chunking resistance than the competitors standard compound, lower overall cost by reducing the number of wheels replaced and replacement labor paid during the life of the truck

Perfect Balance in Performance - designed to perform in a broad spectrum of usages with a perfect balance of dynamic properties, cut and tear resistance and abrasion resistance

Greater Reliability - that offers lower maintenance costs and minimal downtime

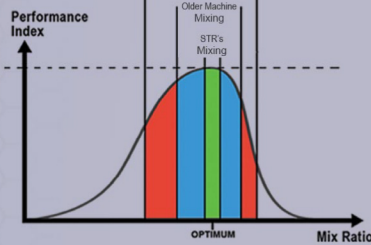
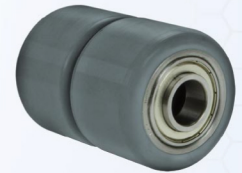
Superior Select

(Ships Same or Next Business Day†)

OEM	OEM Part #	Dimensions
HYG®	524148750	3.25x4.5
Raymond®	632-069	3.25x5.937
Crown®	115033	5x4.125
Raymond®	1082408/06	4x2.5

Complete Load Wheel Kits

- Complete drop in kit replacement
- Save replacement time and cost
- Includes bearings pressed, with or without axle, spacers, washers and pins
- Available in most popular load wheel sizes
 - 3.25 x 3.25
 - 3.25 x 4.5
 - 3.25 x 5.91
 - 3.25 x 5.984
 - 3.25 x 6.5
 - 4 x 2.5



Greater Reliability & More Consistent Performance from advanced polyurethane production



Universal Usage Examples - A perfect fit for Cushothane® load wheels

Reach Trucks & Order Pickers Class II



- Load Wheels**
- Clean, Dry Floors
 - Guide Wheels
 - Medium/Short Run
 - Manufacturing Facility
 - Big Box Stores (Not their DC)

Walkie & Rider Pallet Trucks Class III



- Load Wheels**
- Clean, Dry Floors
 - Medium/Small Load
 - Almost all Walkie Pallet Trucks
- Stabilizing Caster Wheels**
- Clean, Dry Floors
 - Limited debris/dock plate
 - Almost all Pallet Trucks
 - Not for 4th wheel caster

†Refer to terms and conditions at www.SuperiorTire.com



WESTMAT.COM

SUPERIOR
TIRE & RUBBER CORP.
MATERIAL HANDLING COMPONENTS