

CUSHOTHANE® ULTRA-ES™

The Extreme Duty and Extended Service Specialist

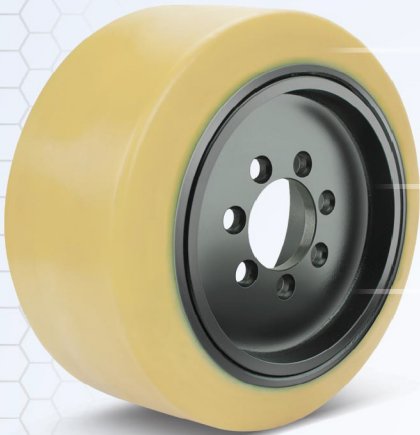
- Heaviest load & highest duty cycle performing tire compound in the market
- Extended service, longest lasting
- Ultimate chunking resistance
- Higher performance & quality consistency
- Incredible low temperature performance

CUSHOTHANE® ULTRA-ES™

Application

- Highest Loads, Highest Speeds and Highest Duty Requirements
- Extended service significantly reduces replacement cycles, downtime and all costs associated.

The ULTRA Performance Application



Heaviest load & highest duty cycle tire compound - Higher strength, lower operating temperature, and lower battery drainage, while maintaining 93A hardness and flexibility required for demanding tire applications.

Extended service, longest lasting - Highest abrasion resistance, proven on DIN Abrasion test machine* and side-by-side field tests.

Ultimate chunking resistance - Advanced polymer formation produces a more organized rigid nano-structure that provides higher cut & tear compared to traditional high performance MDI systems.

Higher performance & quality consistency - Innovative "End-Terminated" crosslink agent allows for a highly controlled reaction process in production.

Tires

CL-I CL-II CL-III

Load wheels

CL-II CL-III

Superior Select™

(Ships Same or Next Business Day†)

OEM	OEM Part #	Dimensions
Crown®	121501	13x5.5x9.5 TSW
Raymond®	632-131	13.5x6x10.5 TSW

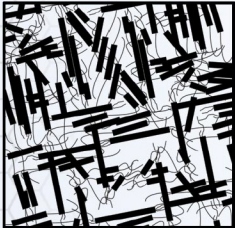
Make and Models:

Straddle/Furniture Picker Truck Tires

Hyster®/Yale® End Rider	10 x 5 x 6.5
Raymond® End Rider	12 x 4.5 x 8
Raymond® Orderpicker	12 x 5 x 9
Hyster®/Yale® NR, NDR OS and SS Series	12 x 5.5 x 8
Crown® PW, PE and PC Series	13 x 4.5 x 8
Crown® SP and RR Series	13 x 5.5 x 8
Crown® SP Series	13 x 5.5 x 9.5
Crown® PW, PE and PC Series	13 x 5.5 x 8
Hyster®/Yale® NR and NDR Series	13 x 5.5 x 10

Physical Properties

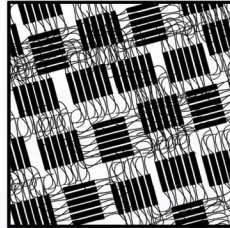
Common Polyurethane



Unorganized Structure and badly distributed

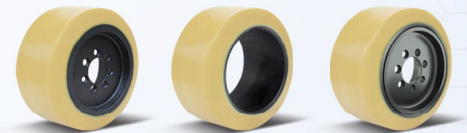
The extraordinary performance of Cushothane® ULTRA-ES™ comes from its well organized and evenly distributed polymer structure. Polyurethane compounds are made up of a distribution of polymer sizes and compositions. Compounds with more organized structures offer a balance of properties with better cut and tear, higher abrasion resistance, and much lower energy loss.

Cushothane® ULTRA-ES™



Organized Structure and highly distributed

Available in Mold-On, Press-On and Press-Fit



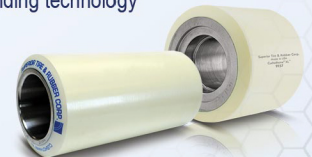
Mold-On (MO)

Press-On (PO)

Press-Fit (PF)

Load Wheel Companion?

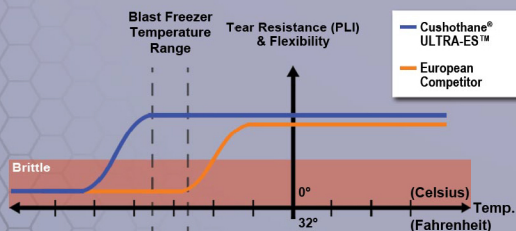
- Cushothane® XL™ Load Wheel with legendary XL3™ bonding technology



All manufacturers' names, numbers, symbols and descriptions are for reference only. It is not implied that any part is the product of the manufacturer. CROWN® is a registered trademark Crown Equipment Corporation. RAYMOND® is a registered trademark of The Raymond Corporation. HYSTER® YALE® is a registered trademark of Hyster - Yale Materials Handling Corporation.

*Refer to terms and conditions at www.SuperiorTire.com

Incredible Low Temperature Performance



Cushothane® ULTRA-ES™ has a very low glass transition temperature and maintains flexibility & chunking resistance at very low freezing temperatures. European Ultra Premium compounds tend to get harder and brittle once temperatures drop to this level.



WESTMAT.COM

SUPERIOR
TIRE & RUBBER CORP.
MATERIAL HANDLING COMPONENTS