

# THE LOADMAC 855

SUPER REACH - 4 WAY

More reach | More power | More performance

- 5500 lbs @ 24" Load Center
- 10' or 12' Mast
- Super Reach - Standard
- Man-on-the-Ground Mounting
- Lighter than Key Competitor Models
- Designed to Fit All Standard Mounting Kits



The New Name in Truck Mounted Forklifts

Loaded with Quality | Loaded with Features

SPECIFICATIONS



Truck Mounted Forklifts

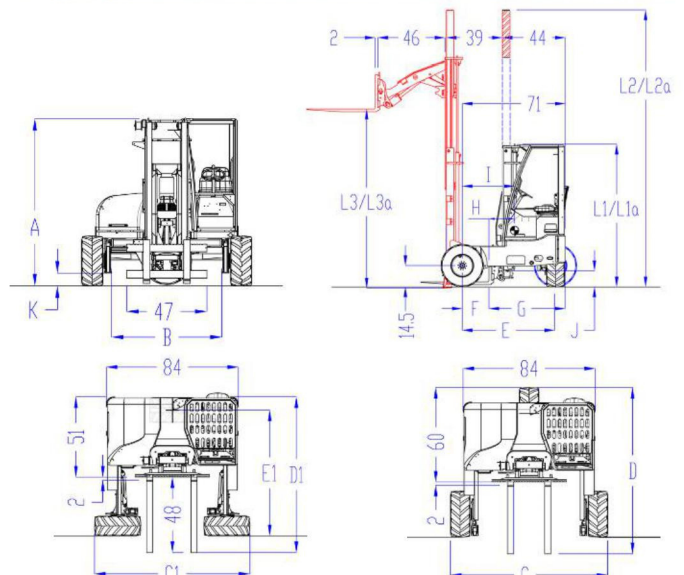
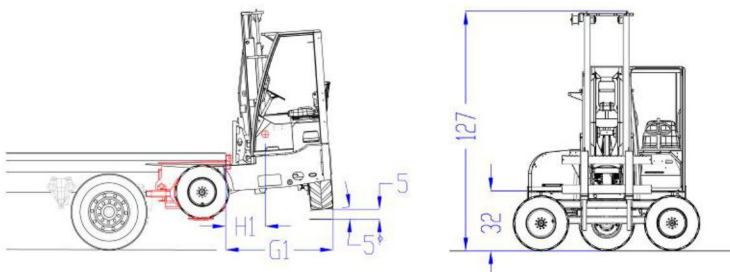


# THE LOADMAC 855

## SUPER REACH - 4 WAY

### Specifications

1	Capacity @ 24" Load Center w/ Mast Retracted - iSR Extended	5500 lbs
1a	Capacity @ 24" Load Center - iSR Extended w/ Mast extended against Truck/Trailer Bed	5500 lbs
2	Hatz 4 Cylinder Diesel Engine	56 hp   41.8 kw
3	Engine Emission Compliance - EPA	Tier 4 Final
4	Maximum Engine RPM	2,800
5	Drive Wheels	3
6a	Steering	Hydrostatic
6b	Rear Wheel Steering - Type	Slew Ring
6c	Rear Wheel Steering Rotation	180°
7a	Front Tires - Trencher Tread	29" x 12.5" --15 - 8 PLY
7b	Rear Tire - Trencher Tread	29" x 12.5" -15 - 8 PLY
8	Maximum Speed (mph)	9
9	Maximum Grade	35%
10	Turning Radius	64"
11a	Unladen Weight (12' mast, wheels, tires)	6,320 lbs
11b	Unladen Weight (12' mast, wheels, tires, mounting hooks, manual folding loadrest, carriage backrest, lumber forks, fuel, and oil)	6,815 lbs
12	Maximum Service / Driveline Pressure	250 bar / 350 bar
13	Mast Tilt - Fixed [Forward/Back]	0° / 0°
14	Mast Travel / iSR Extension / Total Reach	44" / 40" / 84"
15	Fork Carriage Width [Class]	47.25" [CLIII]
16	Fork Carriage Tilting Angle (Forward/Back)	12° / 10°
17	Fork Carriage Side Shift	6"
18	Fork Section [Lumber]	48" x 6" x 1.5"
A	Cab Roof Height	94"
B	Frame Opening	64"
C / C1	Forklift Width: 2 way / 4 way	93" / 99"
D / D1	Forklift Length w/48" Forks: 2 way / 4 way	106" / 99"
E / E1	Wheelbase: 2 Way / 4 Way	64" / 80"
F	Fork Face to Center of Front Tire	18.4"
G / G1	Overhang on Host Vehicle: Minimum / Typical	53" / 59"
H / H1	Center of Gravity to Fork Face (Mast Stowed)	17.8" / 21.5"
I	Center of Gravity to Front Axle (Mast Stowed)	36.1"
J	Equipment Ground Clearance:	12"
K	Stabilizer Ground Clearance	6.5"
L1/L1a	Mast Height Minimum: 10' / 12'	98" / 108"
L2 / 2a	Mast Height Maximum - with Stabilizers: 10' / 12'Mast	192" / 212"
L3 / 3a	Lift Height: 10' / 12' Mast	121" / 141"
	ANSI Standard	B56.14



Note: The diagrams shown are for measurement reference and may not reflect the actual model. Weights may vary depending on the tire and /or forklift options. These specifications are not binding and may be changed at any time without prior notice.

**CREATING SOLUTIONS  
TOGETHER**



# THE LOADMAC 855

## SUPER REACH - 4 WAY

### Standard Features:

- ✓ All-Wheel Drive with Poclain Wheel Motors
- ✓ Differential Lock
- ✓ Hydraulic Front Stabilizer Legs
- ✓ Integrated Sideshift
- ✓ Class 3, 48" Forks
- ✓ Hydrostatic Steering
- ✓ Autophoretic Weatherproofing
- ✓ Triple-Coat Paint Process
- ✓ 'Man-on-the-Ground' Controls
- ✓ Sacrificial Rear Corner Protection Plates
- ✓ Fold-Down Operator Safety Arm/ Arm Rest
- ✓ ROPS/ FOPS Cabin
- ✓ Integrated Reach & Carriage Tilt System
- ✓ One Direction Slew Ring -  
Provides Full 90° Steering in Both Directions
- ✓ Dual Lighting
- ✓ Full LED Work Lights
- ✓ Gromet LED Road Lighting
- ✓ Flashing Amber Safety Beacon & Reverse Alarm
- ✓ Self-Draining Perspex Roof (*for rain protection*)
- ✓ Operator Protection Mesh
- ✓ Ground Start Key Position
- ✓ Anti-Vibration Rubber Mounted Cabin
- ✓ Lightweight Plastic Fuel Tank w/Electronic Level Gauge
- ✓ Mast Anti-Burst Valves
- ✓ Fold-Up Comfort Seat with Occupancy Sensor
- ✓ Hi-Visibility Coiled Operator Seatbelt with Interlock
- ✓ Electric Parking Brake
- ✓ IP67 Switches
- ✓ IP66 Multi-Function Instrument Panel
- ✓ Retractable Transport Chain Pins
- ✓ Transport Chain Kit (*with adjustable end plate*)
- ✓ Suzi Electric Cable
- ✓ Geomet Coated Mast Chains
- ✓ Easy Access Bonnets (*for quick & easy access*)
- ✓ Rear Tie Down Crosses and Front Tie Down Holes

### Machine Specifications:

Manufacturer:	Loadmac
Model:	855iSRUS4W
Lifting Capacity:	5500 lbs
Load Center:	24"
Unladen Weight:	6,320 lbs (including 12' mast with Super Reach, Wheels, Tires) 6,815 lbs with additional items (mounting hooks, manual folding loadrest, fuel, oil, lumber forks and carriage backrest)
Power Source:	Diesel
Engine:	Hatz, 56hp
Transmission:	Hydrostatic
Traction:	3 x 3 (all-wheel drive)
Maximum Speed:	9 mph (dependent on tire option)
Gradeability:	35%
Overall Width:	2 Way - 93" / 4 Way - 99"
Overall Length:	2 Way - 106" / 4 Way - 99" (48" forks)
Cabin Height:	94"
Frame Opening:	65"
Overhang:	Minimum 53" / Typical 59"
Ground Clearance:	11.7"
Mast Type:	2-Stage, Stability Moving Mast with Integrated Second Reach (ISR) (true one-side offload system)
Reach (Combined):	84"
Mast, 12' - Height :	Lift: 141", Minimum: 108"
Carriage Type:	Integrated Sideshift and Tilt Functions
Carriage Sideshift Range:	6"
Carriage Tilt Range:	12° / 10° (forward / backward)
Forks, Lumber:	6" x 1.5" x 48", ITA Class 3
Front Tires:	29" x 12.5" - 8 PLY/ Trencher Tread
Rear Tires:	29" x 12.5" - 8 PLY / Trencher Tread
Options:	
Mast 10' - Height:	Lift: 121", Minimum: 98.5", (-175 lbs)
Forks, Standard:	4" x 2" x 48" (pr: -62 lbs)
Forks, Concrete:	2" x 2" x 48" (2 pr: +58 lbs)
Carriage Backrest:	48" x 36" – Bolt On (+25 Lbs)
Mounting Hooks:	12 "x 13.5" – Bolt On (40 lbs)

### NEW with the 855

- ✓ 56hp Hatz Tier 4 Engine (NO DEF or DPF Filter)
- ✓ Multi Directional Mode Mast Monitor
- ✓ Redesigned Hydraulic Fan "Constant Run" Circuit
- ✓ Improved Weatherproof Seat Switch & Loom Connection
- ✓ Mute Reverse Buzzer Switch
- ✓ Mast Hydraulic Dump Valve Switch for Mounting
- ✓ Revised Rear Levers for Ground Mounting with Speed Control
- ✓ Always ON 4 Way Flashers (Option)
- ✓ Delta Reach Mast
- ✓ Front Light Guards
- ✓ Locking Bonnet Handle with Secondary Security Latch
- ✓ Interlocked Orange Seatbelt
- ✓ Separate, Removable Hydraulic Tank
- ✓ New iSR Cylinder Valving and PRV for iSR Protection
- ✓ Integrated Hook Bars on Chassis
- ✓ 500 Hour Chrome Rods on Cylinders
- ✓ Manual Fold-Down Load Rests

### Improvements • Updates

- ✓ Custom Multidirectional Pivot Pin Washers
- ✓ M16 Non Threaded Toe Setting Bolts (Multidirectional)
- ✓ New Multidirectional Steer Cylinders Retaining Bolts
- ✓ Repositioned Rear Light Junction Boxes
- ✓ Bonnet Stay
- ✓ Flexible Lift Hoses (Not Hard Piped)
- ✓ Revised Drive Pedal Top Plate
- ✓ Integrated Ballast Weight Location Holes/ Threads
- ✓ Updated Rear Wheel Lock in Multidirectional Mode
- ✓ Updated Bearing & Roller Protective Coating